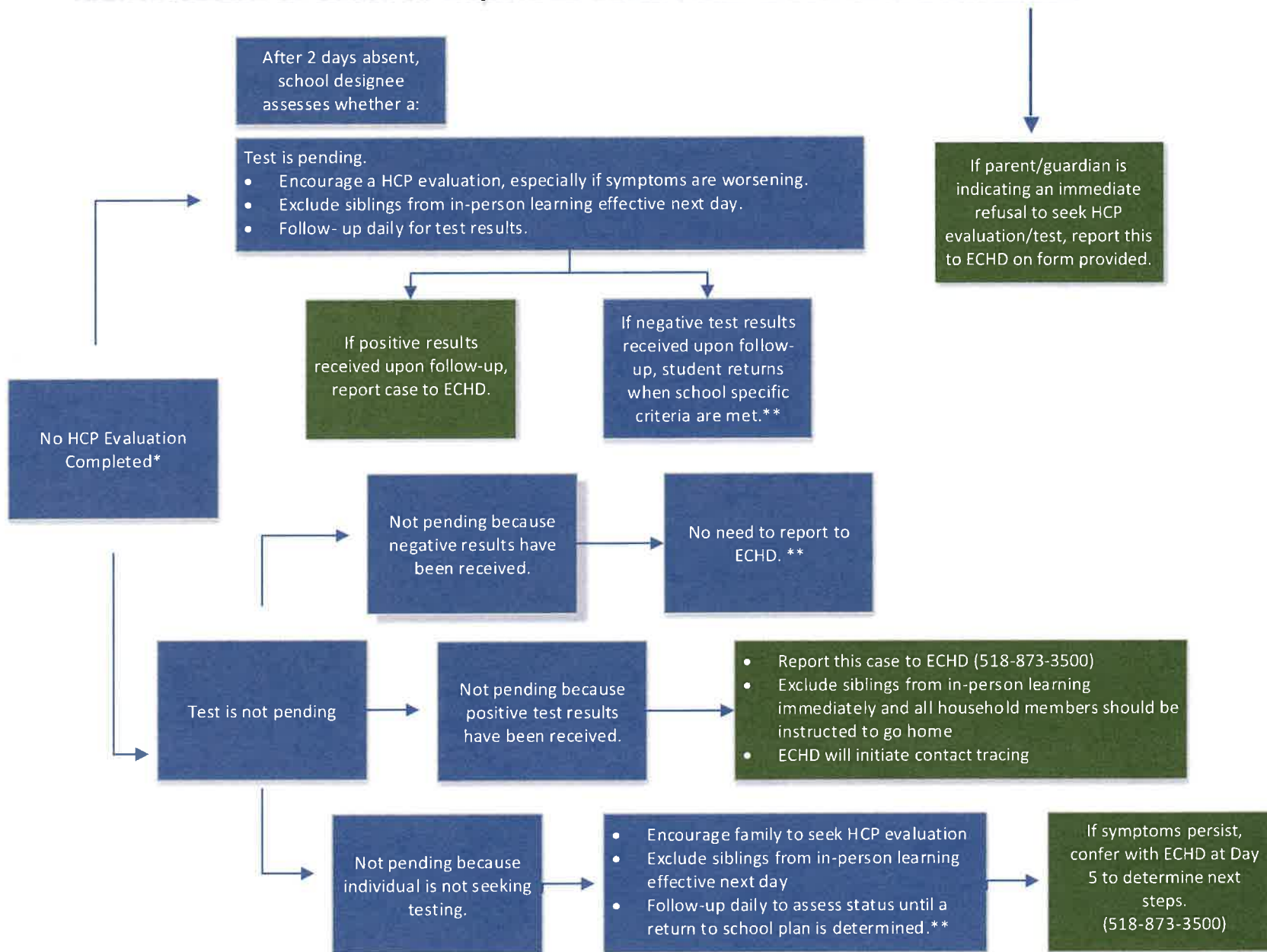


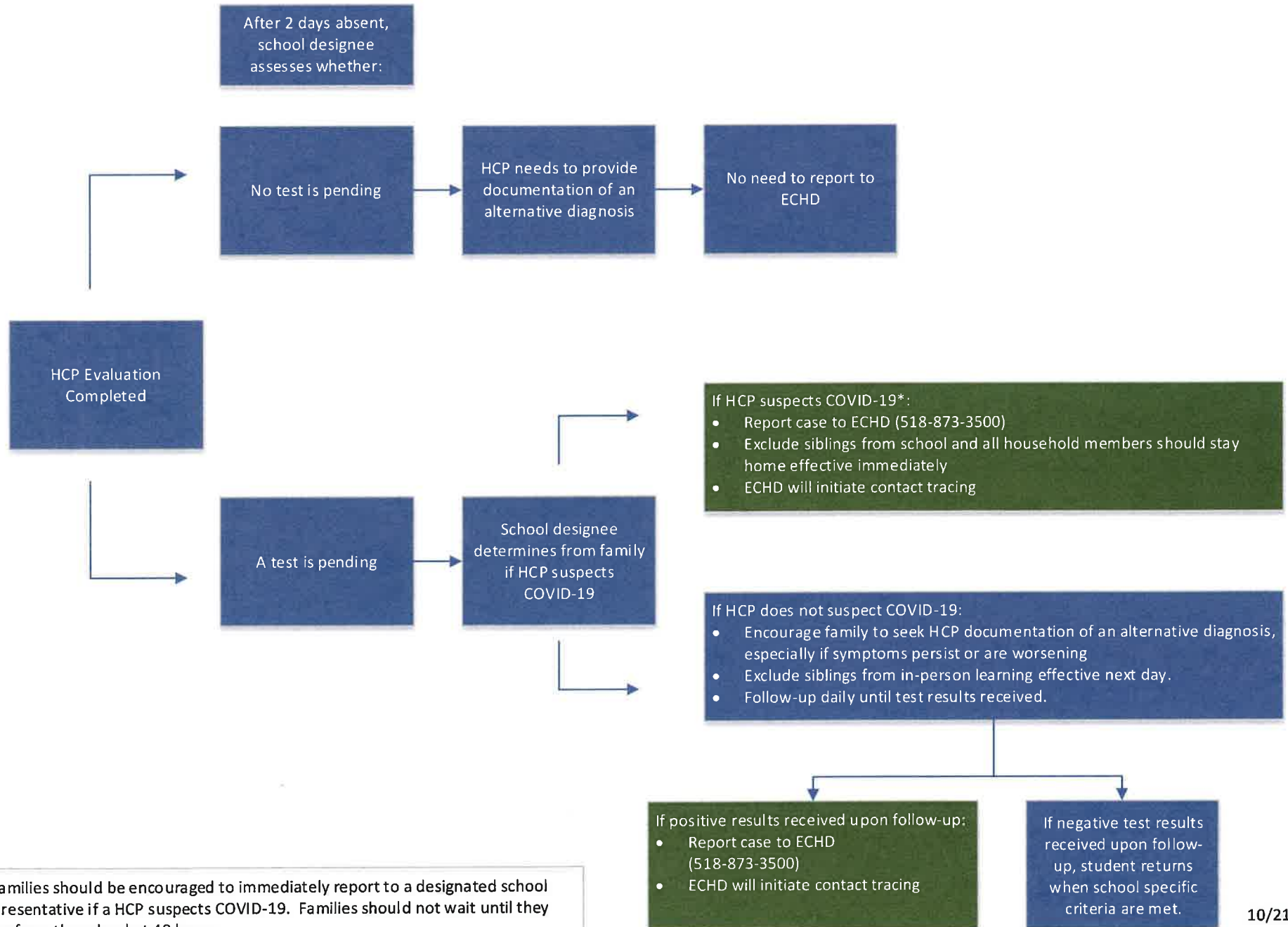
Identification of Cases to Report to ECHD (No Health Care Professional Evaluation*)



* ECHD highly recommends any student or staff experiencing COVID-19 symptoms be evaluated by a health care professional.

** It is at the school's discretion to accept students back without a HCP evaluation and negative test results once meeting other school specific "return to school" criteria.

Identification of Cases to Report to ECHD (Health Care Professional Evaluation)



* Families should be encouraged to immediately report to a designated school representative if a HCP suspects COVID-19. Families should not wait until they hear from the school at 48 hours.