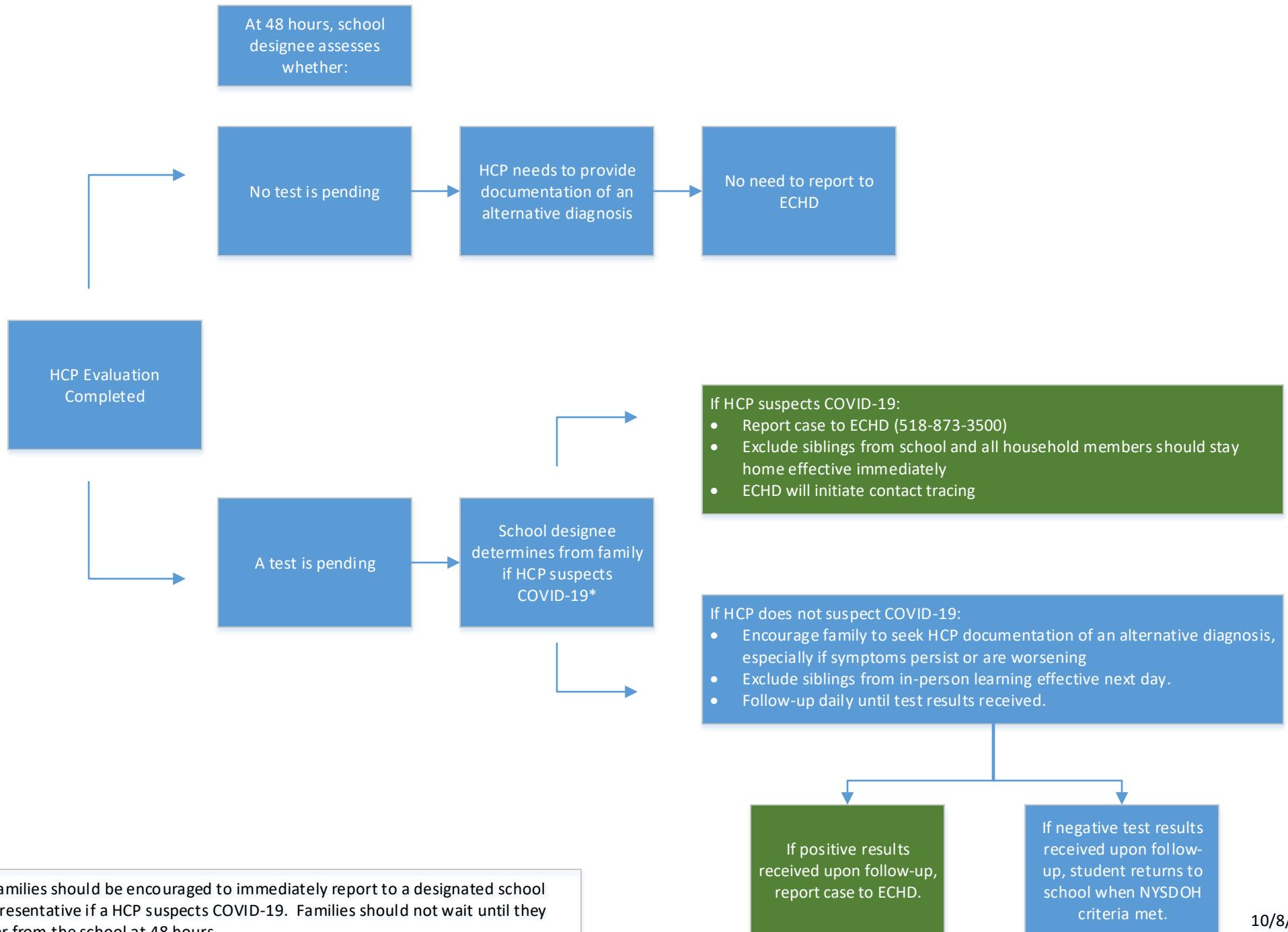
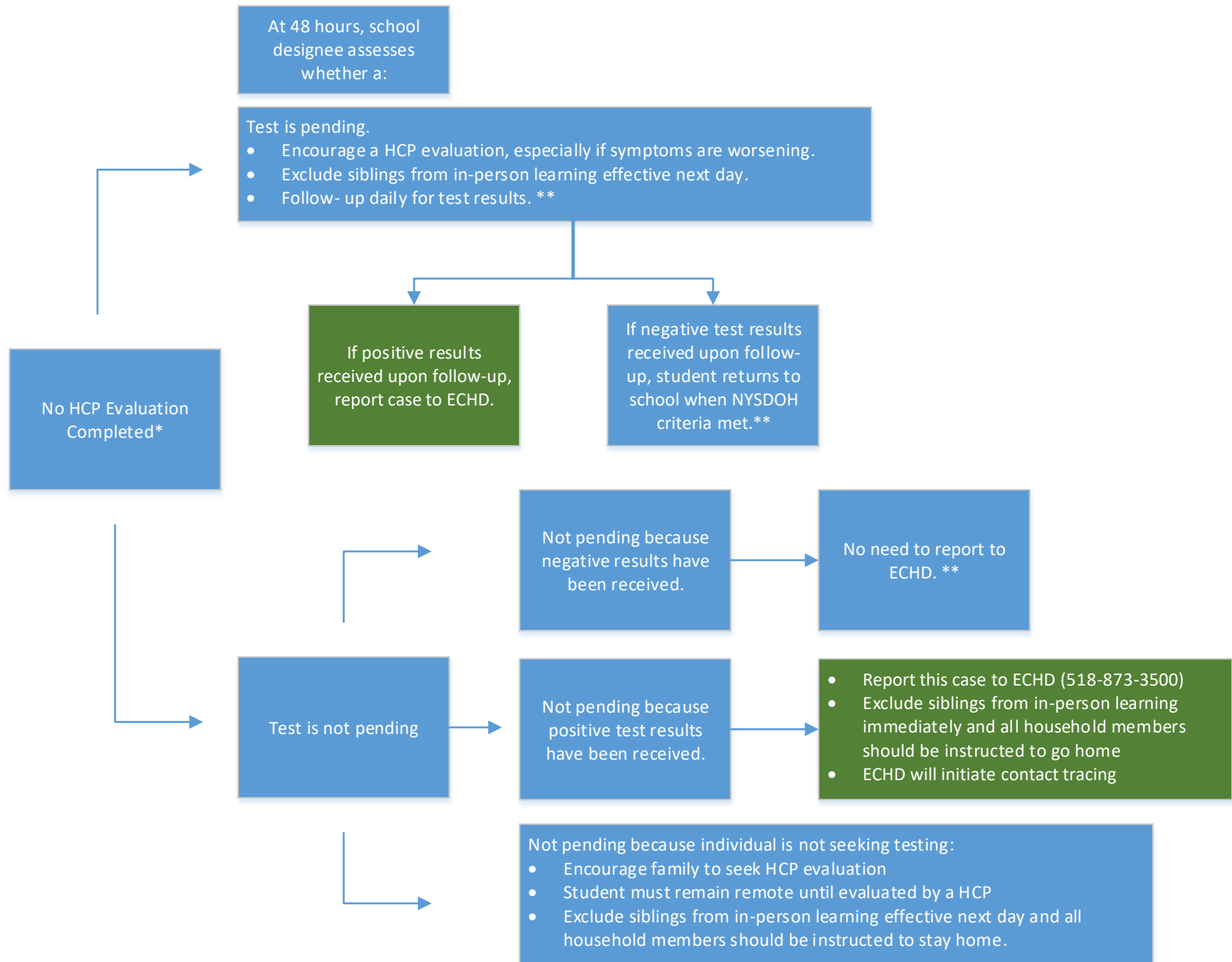


# Identification of Cases to Report to ECHD (Health Care Professional Evaluation)



\* Families should be encouraged to immediately report to a designated school representative if a HCP suspects COVID-19. Families should not wait until they hear from the school at 48 hours.

# Identification of Cases to Report to ECHD (No Health Care Professional Evaluation\*)



\* ECHD highly recommends any student or staff experiencing COVID-19 symptoms to be evaluated by a health care professional.

\*\* Schools will need to decide if they accept student back without a HCP evaluation and negative test results.